
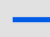
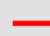

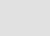
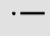
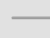

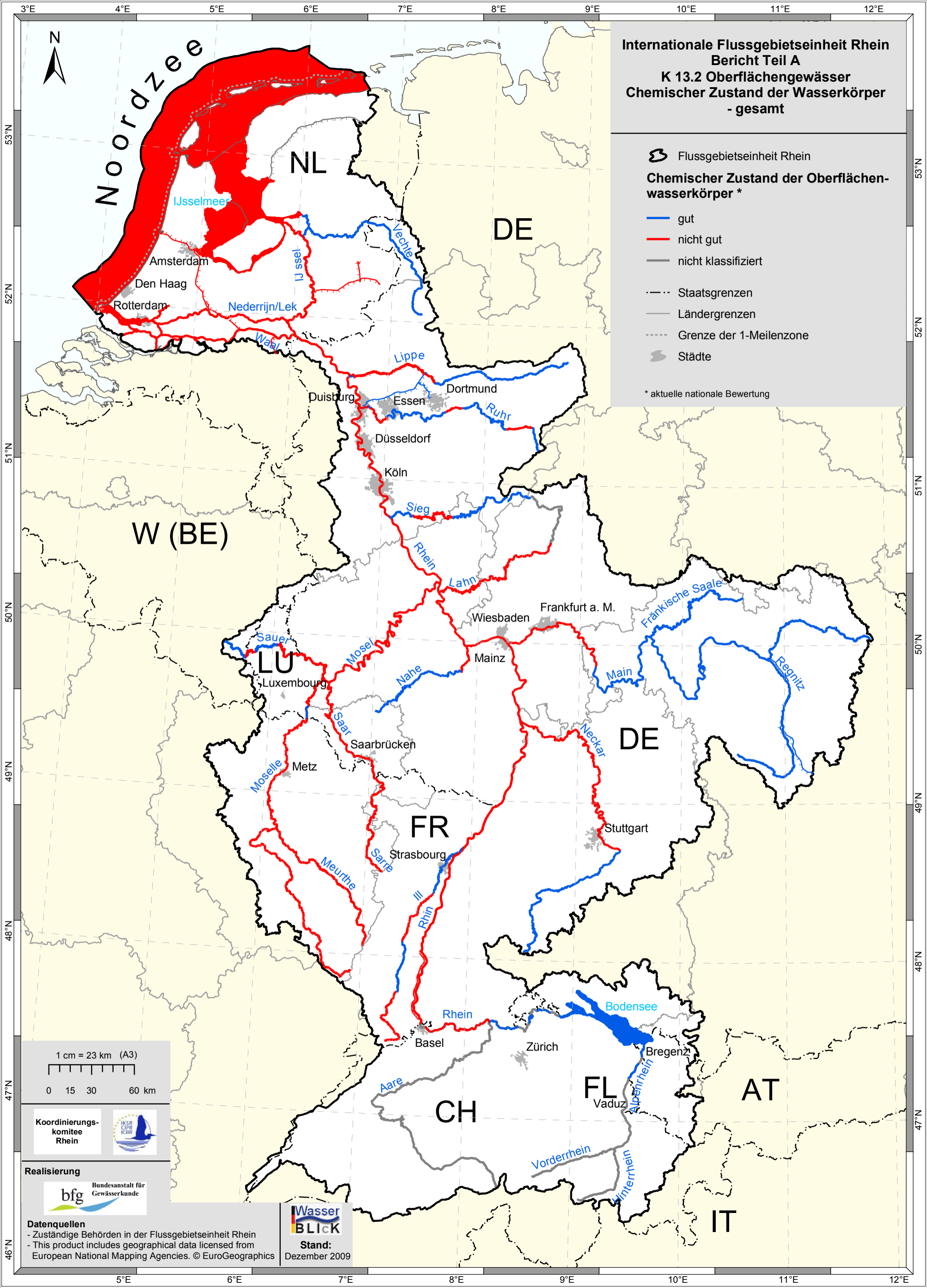


**Internationale Flussgebietseinheit Rhein
Bericht Teil A
K 13.2 Oberflächengewässer
Chemischer Zustand der Wasserkörper
- gesamt**

 Flussgebietseinheit Rhein
Chemischer Zustand der Oberflächenwasserkörper *

-  gut
-  nicht gut
-  nicht klassifiziert
-  Staatsgrenzen
-  Ländergrenzen
-  Grenze der 1-Meilenzone
-  Städte

* aktuelle nationale Bewertung



1 cm = 23 km (A3)
0 15 30 60 km



Datenquellen
- Zuständige Behörden in der Flussgebietseinheit Rhein
- This product includes geographical data licensed from European National Mapping Agencies. © EuroGeographics

WasserBLICK
Stand:
Dezember 2009